

New:
with
guide fence

Edge trimmer TruTool TKA 1500

Top shape in no time

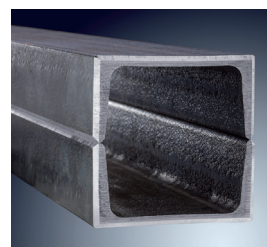
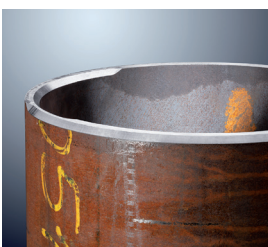
Our TruTool TKA 1500 edge trimmer is an all-rounder and impresses with its best surface quality. In addition flying sparks, smoke and dust are not an issue with this process. Once the machine has been placed in the sheet metal, the workpiece carries the weight and the machine must only be guided with light pressure along the edge. Guide handle shape, size and positioning are perfectly designed to work together and ensure a safe and balanced machine operation.

Uncompromisingly good edges

- For bevel lengths up to 0.591 inch and angles of 30°, 37.5°, 45° and 60° as well R2, R3 and R4 radii
- Consistently quality edges that means no reworking for you
- Stepless adjustment of the bevel length without tools
- Free of burred and oxidized cutting surfaces, dust free and without material changes

Versatile use

- For precise edges as well as interior and exterior contours
- For radial edges of R2, R3 and R4
- For trimming finished edges
- For chamfering to prepare welding seam edges
- For chamfering finished edges. For example, as a work preparation for powder and paint coatings.



Technical datas

Bevel angle		30°		37.5°		45°		60°	
Max. bevel length (ls)	Max. bevel height (hs)	ls	hs	ls	hs	ls	hs	ls	hs
Steel 58000	in	0.591	0.512	0.591	0.476	0.591	0.417	0.591	0.295
Steel 87000	in	0.472	0.409	0.472	0.382	0.472	0.335	0.472	0.236
Steel 116000	in	0.394	0.343	0.394	0.319	0.394	0.280	0.394	0.197
Aluminium 36000	in	0.591	0.512	0.591	0.476	0.591	0.417	0.591	0.295
Minimal sheet thickness	in	0.118 + hs							
Smallest inner radius	in	1.181							
Smallest hole diameter Ø	in	2.165							
Working speed (max.)	ft / min	4.9							
Rated input power	W	2600							
Weight (without cable)	lbs	22.046							
Length/Height	in	26.7 x 7.8							



Practical: the guide fence

Simply get started

For our top-of-the-line edge trimmer TruTool TKA 1500, we now offer a guide fence for processing long, straight sheets. This makes the run-in to the sheet metal extraordinarily easy. A positive side effect: the guide fence also serves as a practical protection against chips.



Find your nearest dealer

USA:

TRUMPF Inc.

111 Hyde Road · 06032 Farmington, CT

Phone +1 800 660 6126

E-Mail powertools@us.trumpf.com · Homepage www.trumpf.com

