

.NEW

New

## TruLaser Series 1000 Basic Edition

01

### Easy to use and Program

Thanks to the intuitive design and the Easy Programming software with integrated cutting data, you can get started right away.

03

### High cutting performance

Stable results thanks to optimal machine design.

02

### Reliable machine and safe cutting

High-quality components and production according to TRUMPF Quality Standard guarantee safe operation.

04

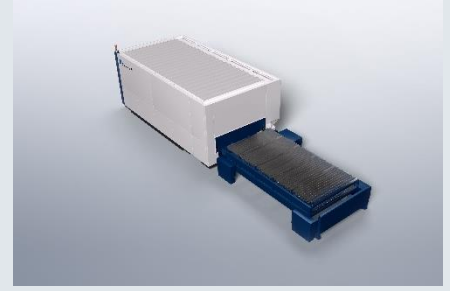
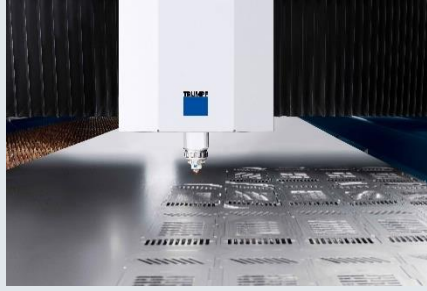
### Strong service network

You can rely on TRUMPF Remote Service, fast technical support and professional training offers.

Pictures are to be understood as an example and may show machine options as well.

# Economic reliable machine

The TruLaser Series 1000 Basic Edition combines TRUMPF quality with an attractive price and offers the best solution for beginners & experienced customers.



Technical data		
		<b>TruLaser 1030 Basic Edition</b>
<b>Working range</b>		
X-axis	mm	3000
Y-axis	mm	1500
Z-axis (Standard/automated)	mm	116
Max. workpiece weight	kg	900
<b>Max. speed</b>		
Simultaneous	m/min	140 approx.
<b>Size*</b>		
Length x Width	mm	10700 x 7300
Height	mm	3100
Weight	kg	9400

\* Approximate values. Refer to the valid installation plan for exact values.

Laser data			
		TruLaser 1030 Basic Edition	
		TruFiber 3001	TruFiber 6001
Max. power	W	3000	6000
<b>Max. sheet thickness</b>			
Mild steel	mm	20	25
Stainless steel	mm	16	25
Aluminium	mm	16	25
Copper	mm	6	10
Brass	mm	6	10

Subject to alteration. Only specifications in our offer and order confirmation are binding.