



Promotion No. 4 October - December 2023

Edge trimmer TruTool TKA 1500 (with 45° tool)
free give away (value up to \$ 1340.-)

Power your way to the top

Our 15 mm edge trimmer TruTool TKA 1500 is adaptable and flying sparks, smoke and dust are not an issue with this procedure. With the TruTool TKA 1500, you can apply chamfer lengths of up to 15 mm in angular positions of 30°, 37.5°, 45° and 60° as well as R2, R3 and R4 radii. The edges are characterized by high quality and repeatability; in addition, any oxidation or deformation of the material is avoided. You can save yourself the trouble of reworking.

Free give-away of your choice

Worth up to * \$ 1340.-



10x cutter ST/CR/Alu

Worth * \$ 661.-

or



**1x cutter mount of your
choice: 30°, 37.5° or 60°**

Worth * \$ 1340.-



* Prices excluding VAT



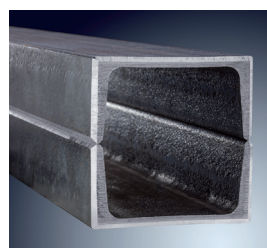
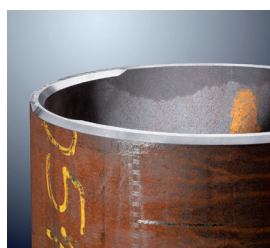
Go to the product



Technical datas									
Bevel angle		30°		37.5°		45°		60°	
Max. bevel length (ls)		ls	hs	ls	hs	ls	hs	ls	hs
Max. bevel height (hs)									
Steel 58000	in	0.591	0.512	0.591	0.476	0.591	0.417	0.591	0.295
Steel 87000	in	0.472	0.409	0.472	0.382	0.472	0.335	0.472	0.236
Steel 116000	in	0.394	0.343	0.394	0.319	0.394	0.280	0.394	0.197
Aluminium 36000	in	0.591	0.512	0.591	0.476	0.591	0.417	0.591	0.295
Minimal sheet thickness	in	0.118 + hs							
Smallest inner radius	in	1.181							
Smallest hole diameter Ø	in	2.165							
Working speed (max.)	ft / min	4.9							
Rated input power	W	2600							
Weight (without cable)	lbs	22.046							
Length/Height	in	26.7 x 7.8							

Versatile use

- For straight edges as well as interior and exterior contours
- For radial edges of R2, R3 and R4-mm radii
- For trimming finished edges
- For chamfering to prepare welding seam edges
- For chamfering finished edges. For example, as a work preparation for powder and paint coatings



Subject to changes



Find your nearest dealer

Follow us #trumpfpowertool



USA:

TRUMPF Inc.

111 Hyde Road · 06032 Farmington, CT

Phone +1 800 660 6126

E-Mail powertools@us.trumpf.com · Homepage www.trumpf.com

